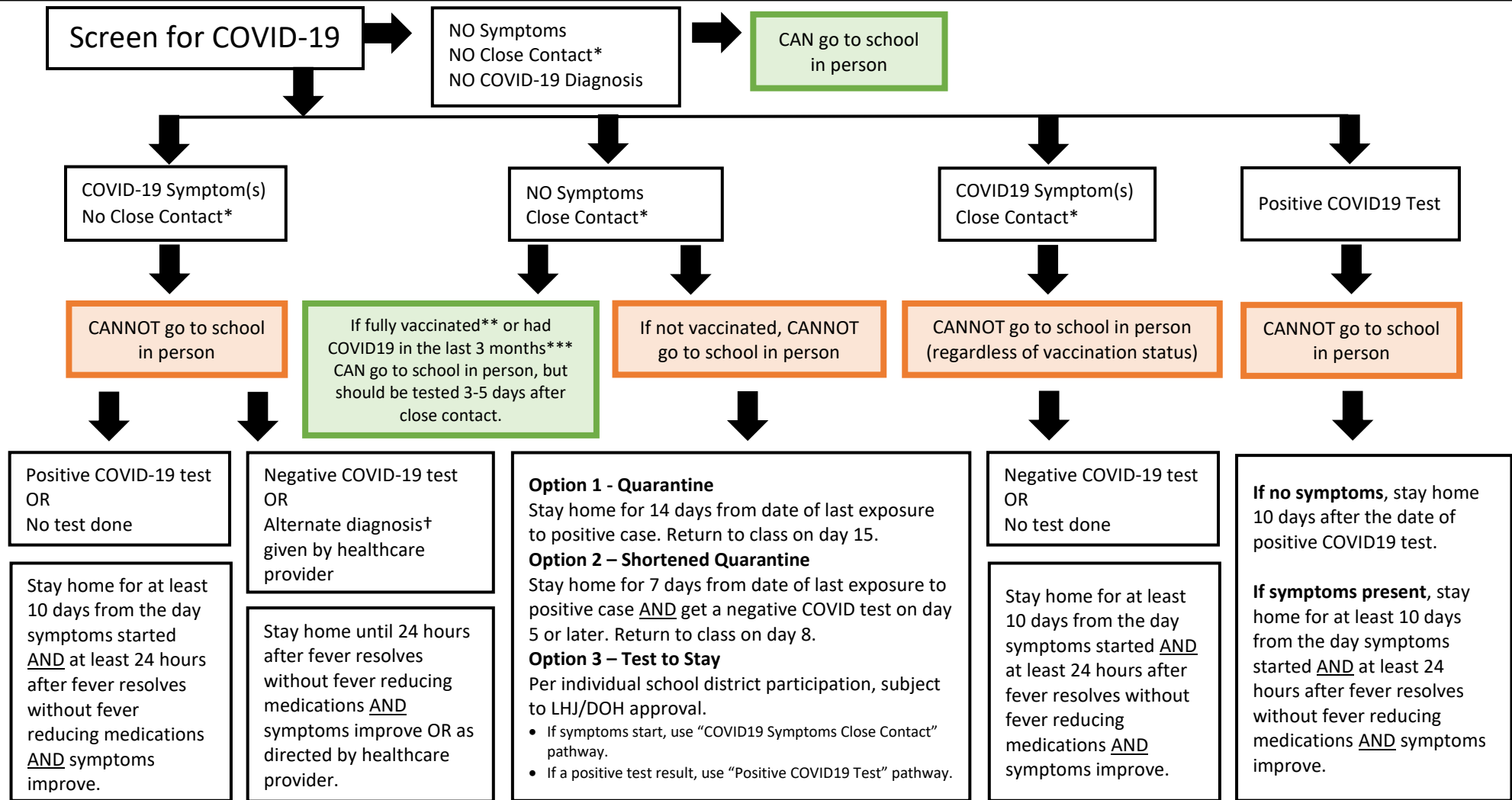


COVID-19 Screening Flow Chart version 3



COVID-19 Symptoms (any new or outside baseline)

- Fever 100.4 F or higher
- Chills
- Cough
- Shortness of breath / difficulty breathing
- New loss of taste or smell
- Fatigue
- Muscle or body aches
- Headache
- Sore throat
- Congestion or runny nose
- Nausea or vomiting
- Diarrhea

***Close Contact** = less than 6 feet of distance for a total of 15 minutes or more in a 24 hr period to a person with COVID-19.

In K-12 indoor classrooms, close contact excludes students who were at least 3 ft away from an infected student when (a) both students were wearing face coverings/masks and (b) prevention strategies were in place.

****Fully Vaccinated:** A person has had both doses of Pfizer or Moderna vaccine (or one dose of Johnson & Johnson vaccine) AND two weeks have passed since the last dose.

*****Parents/guardians of students claiming recent COVID19 infection** will need to provide official documentation of the COVID19 test indicating date, type and result of the test.

†Examples of an Alternative diagnosis made by a healthcare provider include childhood rash illness, strep throat, or non-COVID-19 viral illness.